

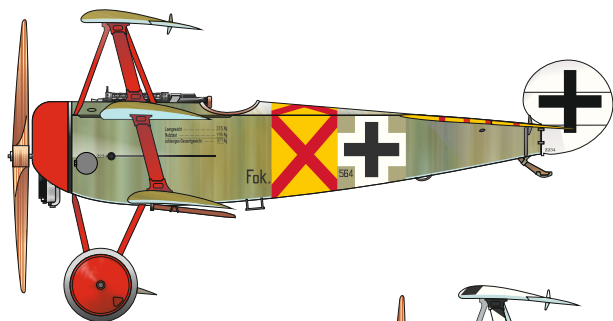
THESE SURFACES WERE FINISHED IN STREAKY PATTERN ROUGHLY BRUSHED OVER THE NATURAL LINEN COVER. FOUR MAIN PIGMENTS WERE USED: VERY DARK BROWN, VIOLET, LIGHTENED AZURE BLUE AND MEDIUM GREEN

RED	H3 MMP C3 003	YELLOW	H4 MMP C4 007	OLIVE DRAB	H52 MMP C12 092	LIGHT BLUE	MMP C74 061
WHITE	H11 MMP C62 001	LIGHT GULL GRAY	H51 MMP C11 063	RED BROWN	H47 MMP C41 012	WOOD BROWN	H37 C43
						STEEL	MC213 MMP 006

SCALE  
1/32

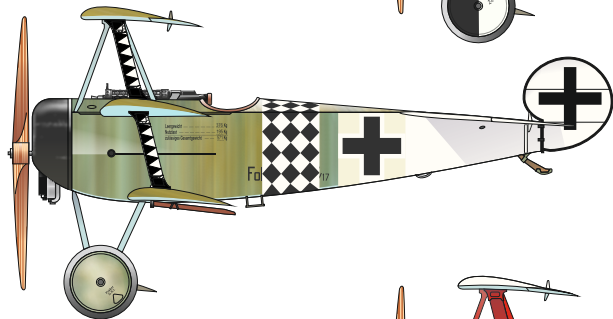
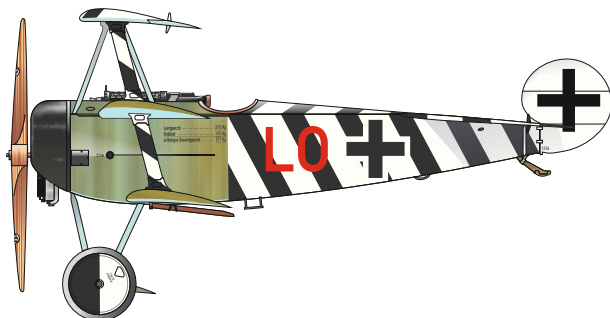
FLYING CIRCUS / JG I

ITEM #  
D32008



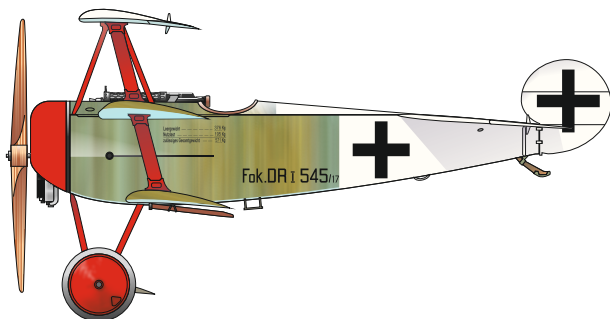
Fokker Dr.I, 564/17, flown by  
Lt. Werner Steinhäuser, Jasta 11,  
Cappy, France, December 1917

Fokker Dr.I, 586/17, flown by  
Lt. Ernst Udet, CO of Jasta 4,  
„La Ferme Puisieux” Airfield  
near Laon, France, May 1918



Fokker Dr.I, flown by  
Lt. Hans Körner, Jasta 2, Halluin-Ost,  
France, May 1918

Fokker Dr.I, 545/17, flown by  
Lt. Hans Weiss, CO of Jasta 11,  
Cappy, France, April 1918



DESIGNED EXCLUSIVELY FOR FOKKER DR.I BY MENG

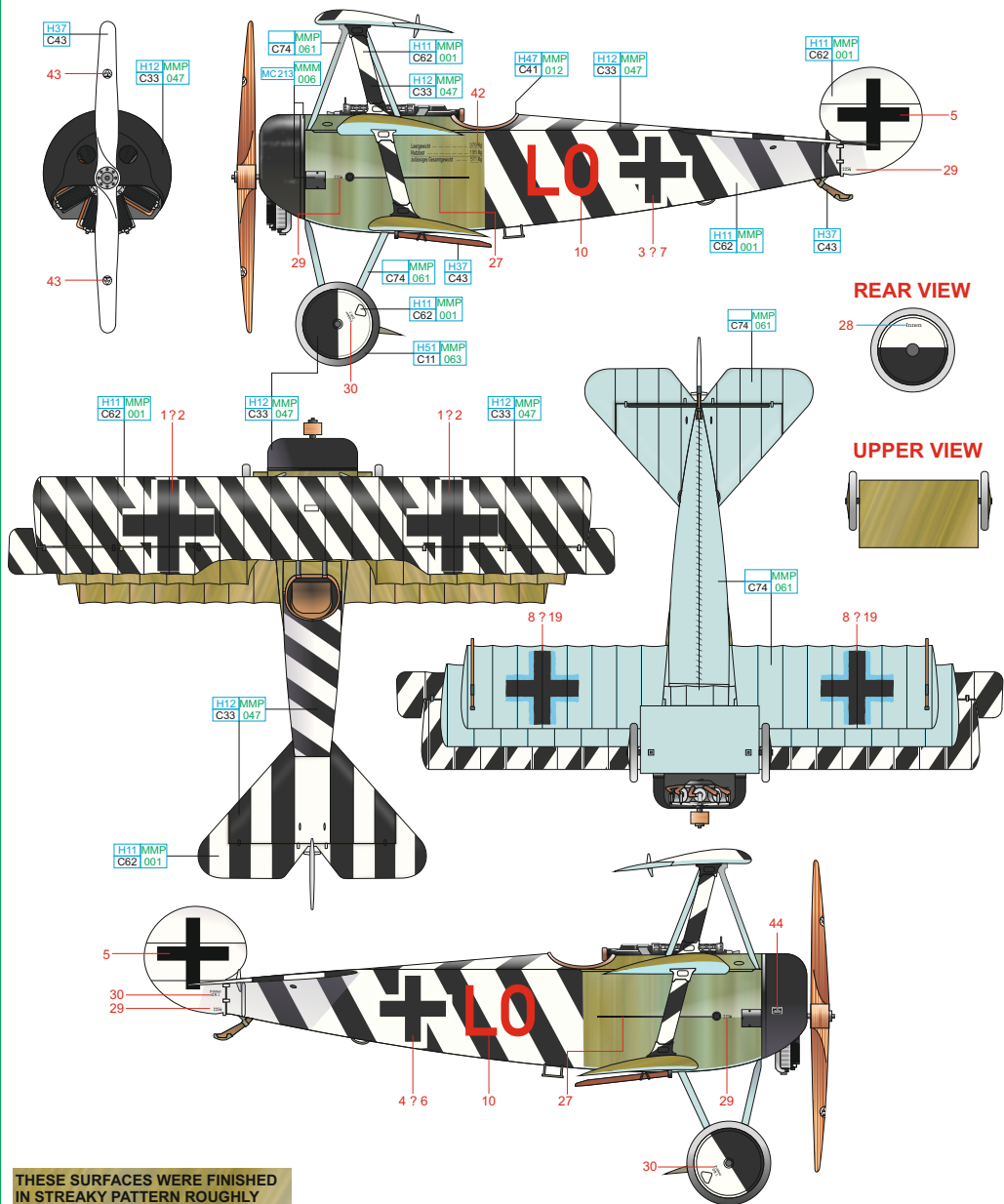


Eduard - Model Accessories, 435 21 Obrnice 170,  
Czech Republic

WWW.EDUARD.COM

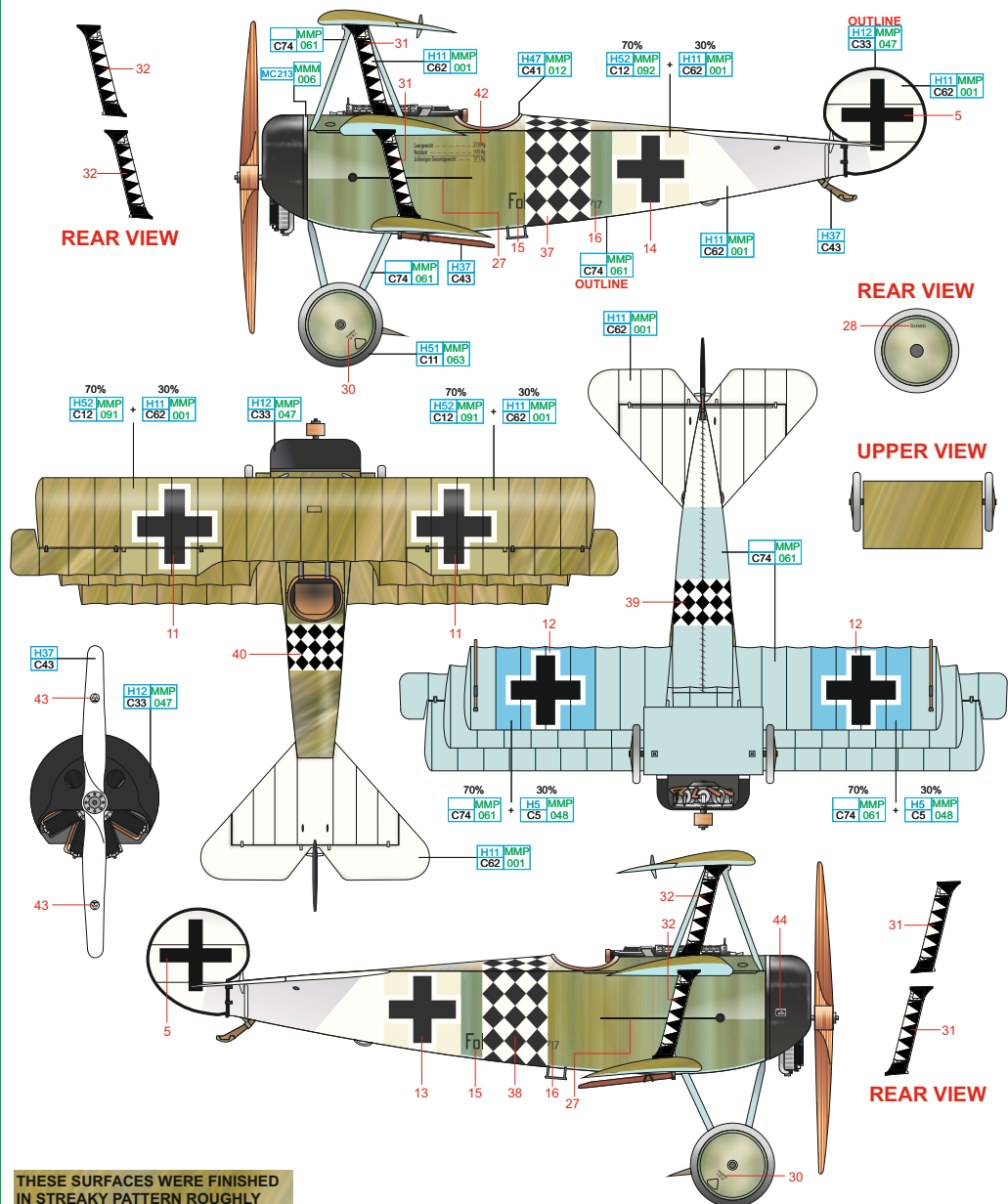
D32008 Flying circus / JG I 1/32





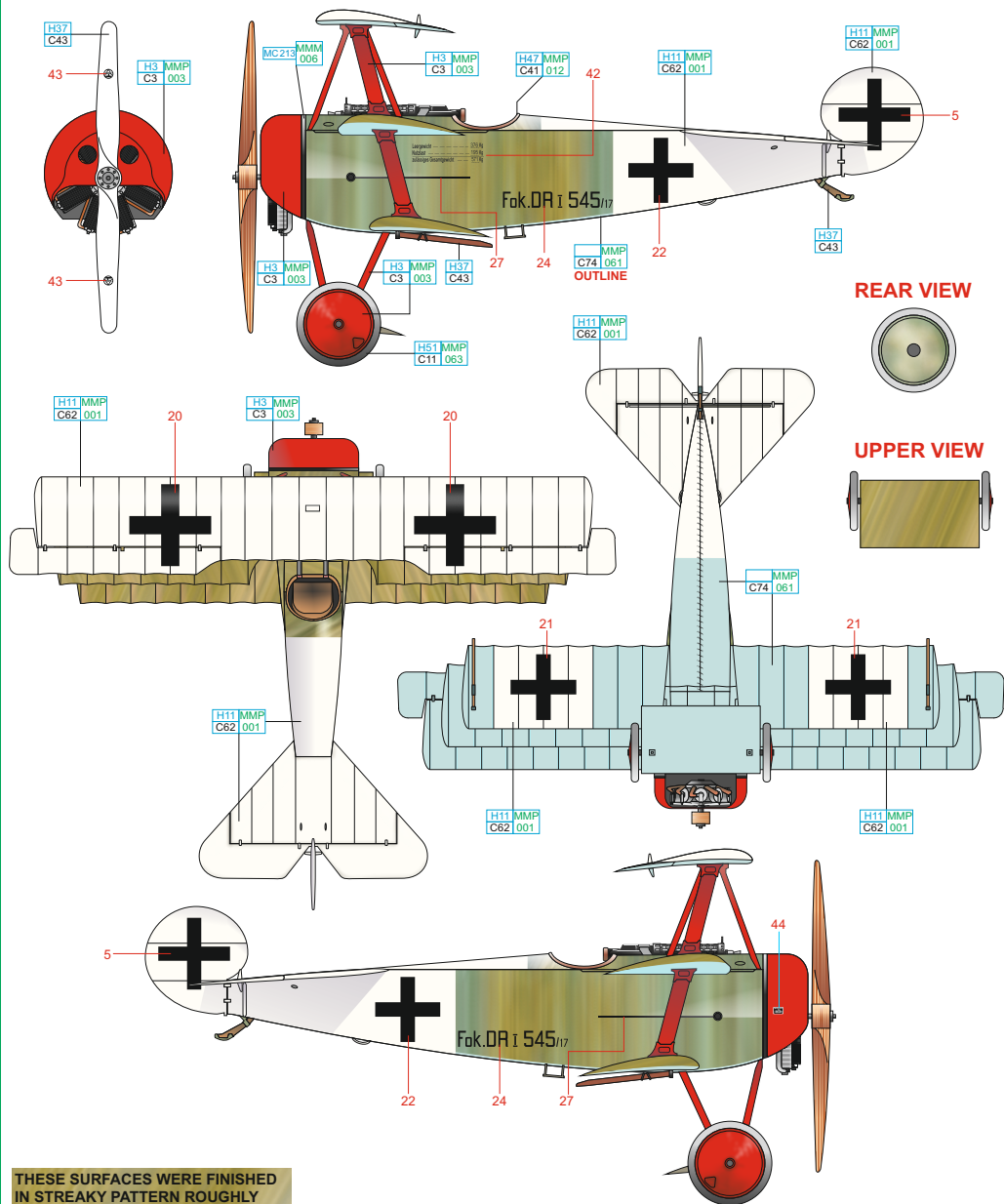
THESE SURFACES WERE FINISHED IN STREAKY PATTERN ROUGHLY BRUSHED OVER THE NATURAL LINEN COVER. FOUR MAIN PIGMENTS WERE USED: VERY DARK BROWN, VIOLET, LIGHTENED AZURE BLUE AND MEDIUM GREEN

BLACK	H12 MMP C33 047	LIGHT BLUE	MMP C74 061	STEEL	MC212 006
WHITE	H11 MMP C62 001	LIGHT GULL GRAY	H51 MMP C11 063	RED	H47 MMP C41 012
				WOOD BROWN	H37 C43



THESE SURFACES WERE FINISHED IN STREAKY PATTERN ROUGHLY BRUSHED OVER THE NATURAL LINEN COVER. FOUR MAIN PIGMENTS WERE USED: VERY DARK BROWN, VIOLET, LIGHTENED AZURE BLUE AND MEDIUM GREEN

BLACK	H12 MMP C33 047	OLIVE DRAB	H52 MMP C12 092	LIGHT BLUE	MMP C74 061	STEEL	MC213 MMM 006
WHITE	H11 MMP C62 001	LIGHT GULL GRAY	H51 MMP C11 063	RED BROWN	H47 MMP C41 012	WOOD BROWN	H37 C43
						BLUE	H5 MMP C5 048

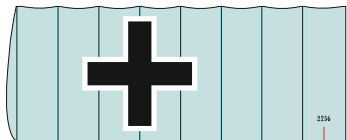


THESE SURFACES WERE FINISHED IN STREAKY PATTERN ROUGHLY BRUSHED OVER THE NATURAL LINEN COVER. FOUR MAIN PIGMENTS WERE USED: VERY DARK BROWN, VIOLET, LIGHTENED AZURE BLUE AND MEDIUM GREEN

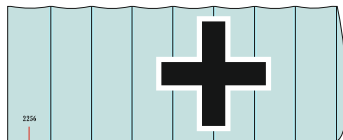
LIGHT BLUE	MMP C74 061	RED	H3 MMP C3 003	STEEL	MC213 006
WHITE	H11 MMP C62 001	LIGHT GULL GRAY	H51 MMP C11 063	RED BROWN	H47 MMP C41 012
				WOOD BROWN	H37 C43

29 Fokker Dr.I of Lt. Ernst Udet

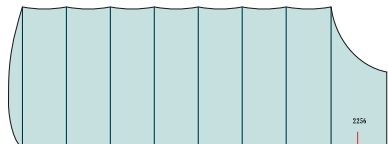
41 Fokker Dr.I of Lt. Werner Steinhäuser



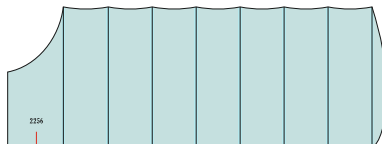
29?41



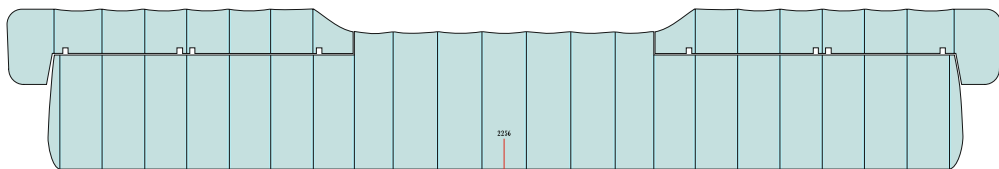
29?41



29?41



29?41



29?41