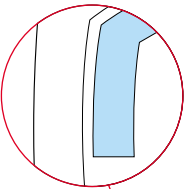
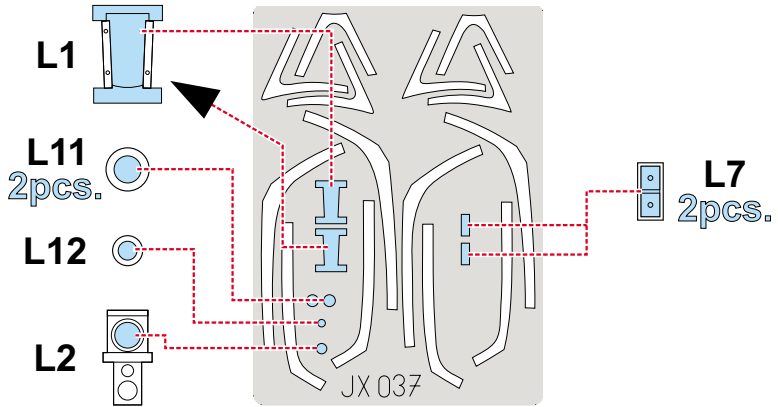
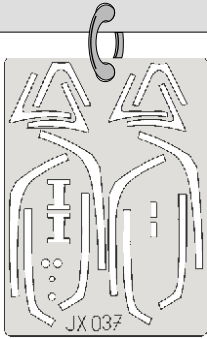


eduard
MASK

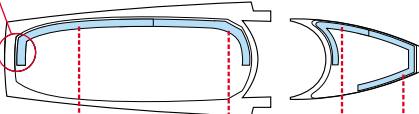
F-16CJ 1/32

The die-cut mask for accurate canopy frame painting of the
Tamiya 1/32 KIT

JX 037



1.)

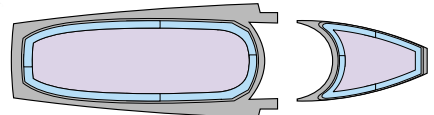


3.)

INTERIOR COLOR

4.)

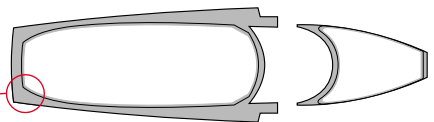
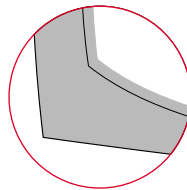
RUBBER COLOR



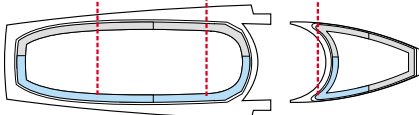
LIQUID MASK ■

5.)

REMOVE MASK

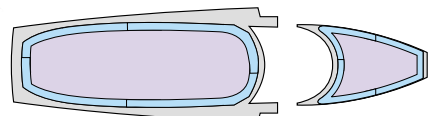


2.)



8.)

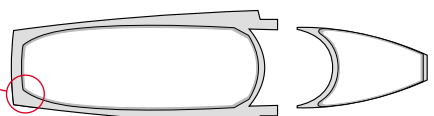
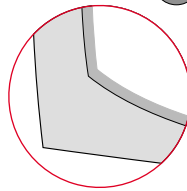
CAMOUFLAGE COLOR



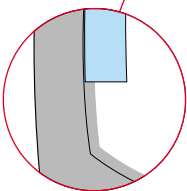
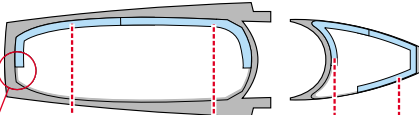
LIQUID MASK ■

9.)

REMOVE MASK



6.)



7.)

